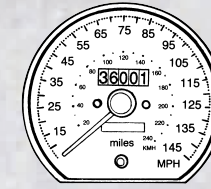


CHOOSE THE BEST SERVICE CONTRACT IN THE INDUSTRY...



Powertrain Protection (Low)

ENGINE

Cylinder Block and all Internal Parts
Cylinder Head Assemblies
Timing Case, Chain, Gears, Belts and Sprockets
Vibration Damper (Harmonic Balancer)
Oil Pump
Intake and Exhaust Manifolds
Water Pump and Housing
Core Plugs
Valve Covers
Oil Pan
Fuel Injectors (Excluding Clogged Injectors)
Turbocharger Housing and all Internal Parts
Turbocharger Wastegate Actuator
Supercharger
Serpentine Belt Tensioner
Seals and Gaskets for Listed Components only

TRANSMISSION

Transmission Case and all Internal Parts
Torque Converter with Starter Ring Gear
Transmission Range Sensor
Transmission Control Module
Drive Plate
Flex Plate
Flywheel
Starter Ring Gear
Bell Housing
Oil Pan
Seals and Gaskets for Listed Components only
Manual Transmission Clutch Parts are not covered at any time.

FRONT-WHEEL DRIVE

Transaxle Case and all Internal Parts
Drive Shaft and Axle Shaft Assemblies and their Housings
Constant Velocity Joints and Boots
Front Wheel Bearings
Differential Cover
Oil Pan
Transaxle Speed Sensor/Solenoid Assembly
PRNDL Position Switch
Transaxle Electronic Controller
Flywheel or Torque Converter
Drive Plate with Starter Ring Gear
Bell Housing
Seals and Gaskets for Listed Components only
Manual Transmission Clutch Parts are not covered at any time.

REAR-WHEEL DRIVE

Rear Axle Housing and all Internal Parts
Axle Shafts/Shaft Bearings
Drive Shaft Assemblies/Shaft Center Bearings
Universal Joints and Yokes
Seals and Gaskets for Listed Components only
Disconnect Housing Assembly

FOUR-WHEEL/ALL WHEEL DRIVE

Transfer Case/Power Transfer Unit and all Internal Parts
Viscous Coupler
Front and Rear Axle Housing Assemblies and all Internal Parts
Rear Drive Line Module
Axle Shafts/Shafts Bearings
Axle Shaft Assemblies
Constant Velocity Joints and Boots
Drive Shaft Assemblies/Center Bearings
Universal Joints and Yokes
Disconnect Housing Assembly
Differential Carrier Assembly and all Internal Parts
Output Ball Bearing and Flange
End Cover
Overrunning Clutch
Vacuum Motor
Torque Tube
Pinion Spacer and Shim
Seals and Gaskets for Listed Components only

AIR CONDITIONING

Manufacturer's Air Conditioning only
Compressor, Clutch/Coil
Condenser
Evaporator
Receiver-Drier
Expansion Valve
Hoses and Lines
Low/High Pressure Cut-Off Switch
Clutch Cycling Switch
Instrument Panel Control Assembly
Power Module
Air Conditioning/Heating Blower Motor
Seals and Gaskets for Listed Components only
Aftermarket Air Conditioning not covered.

STEERING

Steering Gear Housing and all Internal Parts
Power Steering Gear/Pump
Steering Shaft Lower Coupling
Rack and Pinion Assembly
Seals and Gaskets for Listed Components only

Protection Plus (High) Includes contents of Powertrain Protection...Plus:

COOLING AND FUEL

Cooling Fan, Clutch, Motor
Radiator
Coolant Temperature Switch
Water Pump and Housing
Electric and Mechanical Fuel Pump
Tank Sender Unit
Fuel Tank and Lines
Seals and Gaskets for Listed Components only

FRONT SUSPENSIONS

MacPherson Struts
Struts Mounting Plates, Bushings, and Bearings
Upper and Lower Control Arms
Control Arm Shafts/Bushings
Upper and Lower Ball Joints
Front Wheel Bearings
(front-wheel-drive vehicles only)

REAR SUSPENSION

Rear Leaf Springs
Rear Coil Springs
Auxiliary Springs
Spring Interliner
Spring Bushing
Spring Shackles
U-Bolt Rear Spring
Spring Hanger
Axle Trac Bar
Lateral Link Arm
Shock Mount Plate
Rear Trailing Arm Assembly
Stabilizer/Sway Bar
Stabilizer/Sway Bar Link
Stabilizer/Sway Bar Bushing

ELECTRICAL

Starter Motor and Solenoid
Alternator
Single Board Engine Controller (SBEC)
Powertrain Control Module
Distributor
Ignition Coil
Coil Pack Assembly
Voltage Regulator
All Wiring Harnesses
Electronic Fuel Injection System *(excluding clogged injectors)*
Windshield Wiper Motor
Rear Window Wiper Motor
Wiper Control Module
Manually Operated Electrical Switches
Neutral Safety Switch
Temperature Sending Unit/Switch
Oil Pressure Sending Unit/Switch
Body Computer/Control Module
Rear Window Defroster

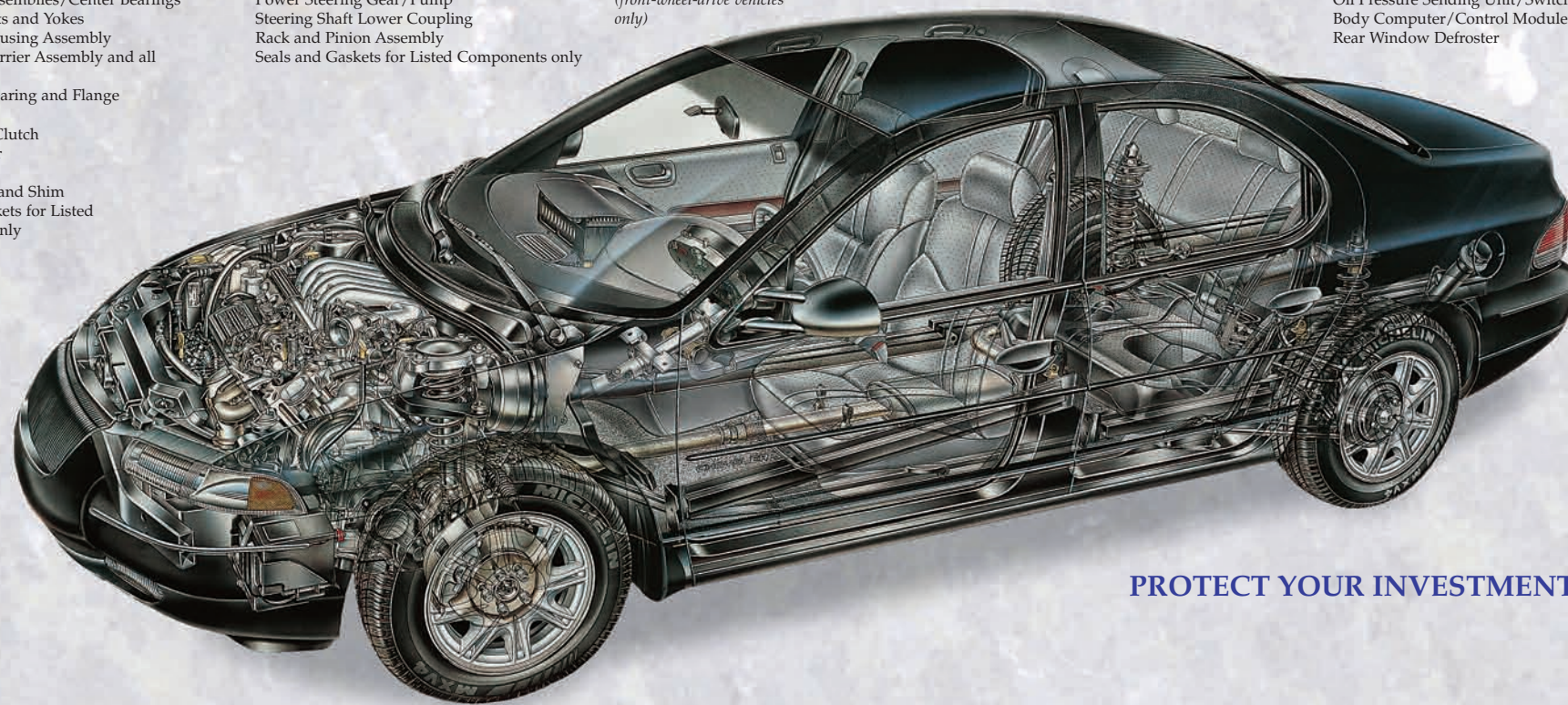
Power Window Motors
Power Window Regulator/Flex Track
Power Antenna
Power Seat Motors
Power Door Locks and Linkage *(excluding latch assembly)*
Keyless Entry Receiver/Module
Trip Computer
Overhead Electronic Vehicle Information Center
Message Center
Overhead Electronic Compass/Temperature
Power Sunroof Motor
Convertible Top Motor
Electric Mirror Motor and Controls
Cruise Control Servo
Headlight Door Motor
Concealed Headlamp Module
Manufacturer-Installed Accessories
Factory-Installed Radios and Speakers *(includes CD and Tape Players)*
Clocks
Note: Any Remote Transmitter is not covered at any time.

INSTRUMENTATION

Electronic Instrument Cluster
Amp/Voltage Gauge
Fuel Gauge
Temperature Gauge
Tachometer
Oil Pressure Gauge
Turbo Gauge
Electrical and Mechanical Speedometer

BRAKES

Master Cylinder
Assist Booster
Wheel Cylinders
Disc Brake Calipers and Pistons
Brake Lines, Hoses, Fittings, Seals, and Gaskets
Proportioning Valve
Anti-Lock Brake System's Hydraulic Assembly Controller
Sensors, Switches and Relays
Brake Pads, Shoes, Rotors, and Drums are not covered at any time.



PROTECT YOUR INVESTMENT

ABOUT THIS COVERAGE

Rental Coverage... You'll be reimbursed for car rental expenses (up to \$30 per day for a maximum of 5 days) every time the repair of a covered component requires that your vehicle be kept in a repair shop overnight.

Towing Coverage... Reimbursement will be made for towing expenses (up to \$100) if your automobile is disabled as the result of a mechanical breakdown of a covered part. (USA and Canada only.)

Not a "Reimbursement" Policy... All claims for mechanical repairs of covered components will be paid directly to the authorized repairer. You pay only the low deductible.

Best Value... The best coverage available at the best price. Depending on the coverage you choose, and regardless of the make of your vehicle, this plan insures that you get the most comprehensive protection, at the lowest possible price.



INTERNATIONAL WARRANTY
SERVICES GROUP

OWNER'S PROTECTION PLAN
LIMITED OVERSEAS COVERAGE

- ✔ Extends Powertrain Protection or Protection Plus coverage to all locations where OMSC sells and delivers vehicles *worldwide*, for a minimal added cost.**
- ✔ Covers all components of selected Plan, except towing.
- ✔ Administered by International Warranty Services Group, Kronberg, Germany.
- ✔ See service plan for complete details.

For Assistance

IN THE U.S.A. OR CANADA:
INTERNATIONAL WARRANTY
SERVICES GROUP
P.O. Box 407
Woodbury, New York 11797
Nationwide: 1-800-347-7019
New York: 516-496-1862
Email: iwsg@militarycars.com

IN GERMANY, BELGIUM OR
HOLLAND (IWSG)
Kronberg, Germany 06173-704256 or
06173-704257
All other locations:
contact your sales agent for information.

Please Note...

The coverage extended under the Owner's Protection Plan (OPP) is coverage in addition to the manufacturer's limited warranty. In accordance with Federal Law, the term "service contract" as referred to in this brochure shall be interpreted as set forth in 15 USCS 2301.

This brochure is intended for general information regarding service plans. See the actual service plan for complete terms and conditions. IWSG issued plans and addendums are not affiliated or associated with the manufacturer. You may purchase extended service plans from the manufacturer of your vehicle. See your sales agent for details.

All illustrations and specifications are to the best of our knowledge correct as of the date of publication.

This brochure was not sponsored or paid for in full or in part by the Army Air Force Exchange Service or the Navy Exchange Service Command.

**See your agent for details.

OWNER'S PROTECTION P · L · A · N

EXTENDED SERVICE OPTIONS
FOR YOUR NEW VEHICLE



Stateside Or Worldwide,
Choose The Protection
That Best Fits Your Needs.

Effective 6/1/06

Our Special Military Owner's Protection Plans Offer You These Important Benefits...

- ✔ **The Best Warranties In The Business Are Made Even Better With The Owners Protection Plan!** Extended service plans may be purchased for Ford, Lincoln, Mercury, Dodge, Jeep and Chrysler models. You can have comprehensive coverage that best meets your driving needs. Ask your Sales Representative for specific details about plans available for your vehicle.
- ✔ **Two Levels Of Coverage To Choose From...** Powertrain Protection (Low) covers the powertrain, which includes the engine, transmission, differential, plus air conditioning and steering. Protection Plus (High) covers the powertrain and an extensive list of nearly every mechanical component of the vehicle. Select the plan that best suits your needs.
- ✔ **Worldwide Plan Available.** Plans are available for either Stateside or Worldwide coverage. The Worldwide Plan offers the convenience of fast, reliable repair claims service wherever Exchange New Car Sales locations are maintained and vehicles are delivered.
- ✔ **Rental and Towing Are Covered, Too!** Whether you choose Powertrain Protection (Low), or Protection Plus (High), you'll be entitled to rental reimbursement if a covered repair keeps your vehicle in the shop overnight. If a mechanical breakdown of a covered component means your automobile has to be towed, you're covered for that, too (USA and Canada only). See other side for details.
- ✔ **Easy To Handle Payments.** If you purchase this coverage when you buy your car, you can finance the entire cost of the Owner's Protection Plan along with your vehicle, for one manageable monthly payment.
- ✔ **When It's Time To Sell, Your Vehicle is Worth More.** Because your Owner's Protection Plan is transferrable to the next owner, you can sell your car or truck at the retail market price with a service plan – just like a dealer does. So even if you never use your Owner's Protection Plan, offering it with your car or truck adds value at resale time. (Optional Overseas coverage is non-transferrable).
- ✔ **Protection From Huge Repair Bills.** With the Owner's Protection Plan, you don't have to lay out hundreds of dollars for authorized repair bills. All you pay is the low deductible: the plan pays the rest directly to the repairer.
- ✔ **The Best Coverage Available, At The Best Price.** Depending on the coverage you choose, and regardless of the make of your vehicle, this plan insures that you get the most comprehensive protection, at the lowest possible price.

IWSG

INTERNATIONAL WARRANTY
SERVICES GROUP